

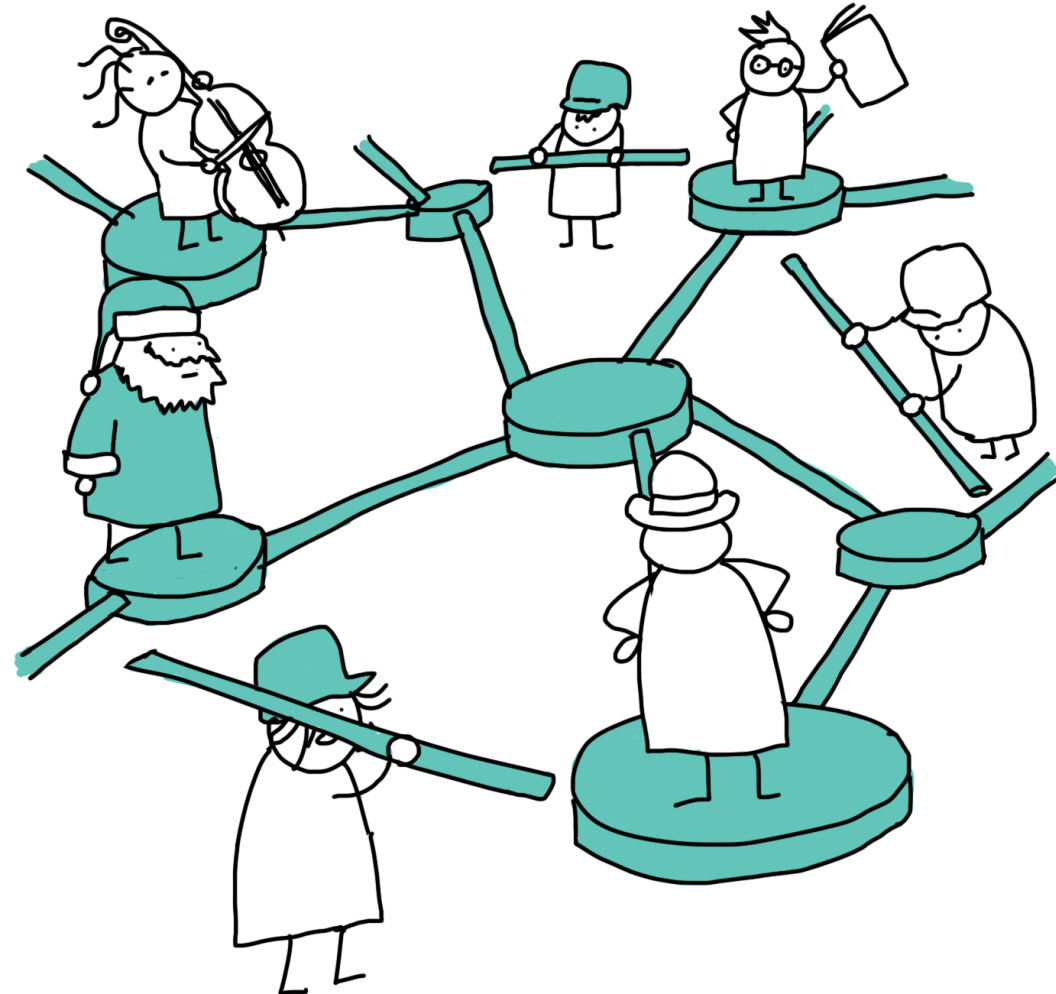
THE
FINNISH
INSTITUTE
IN LONDON



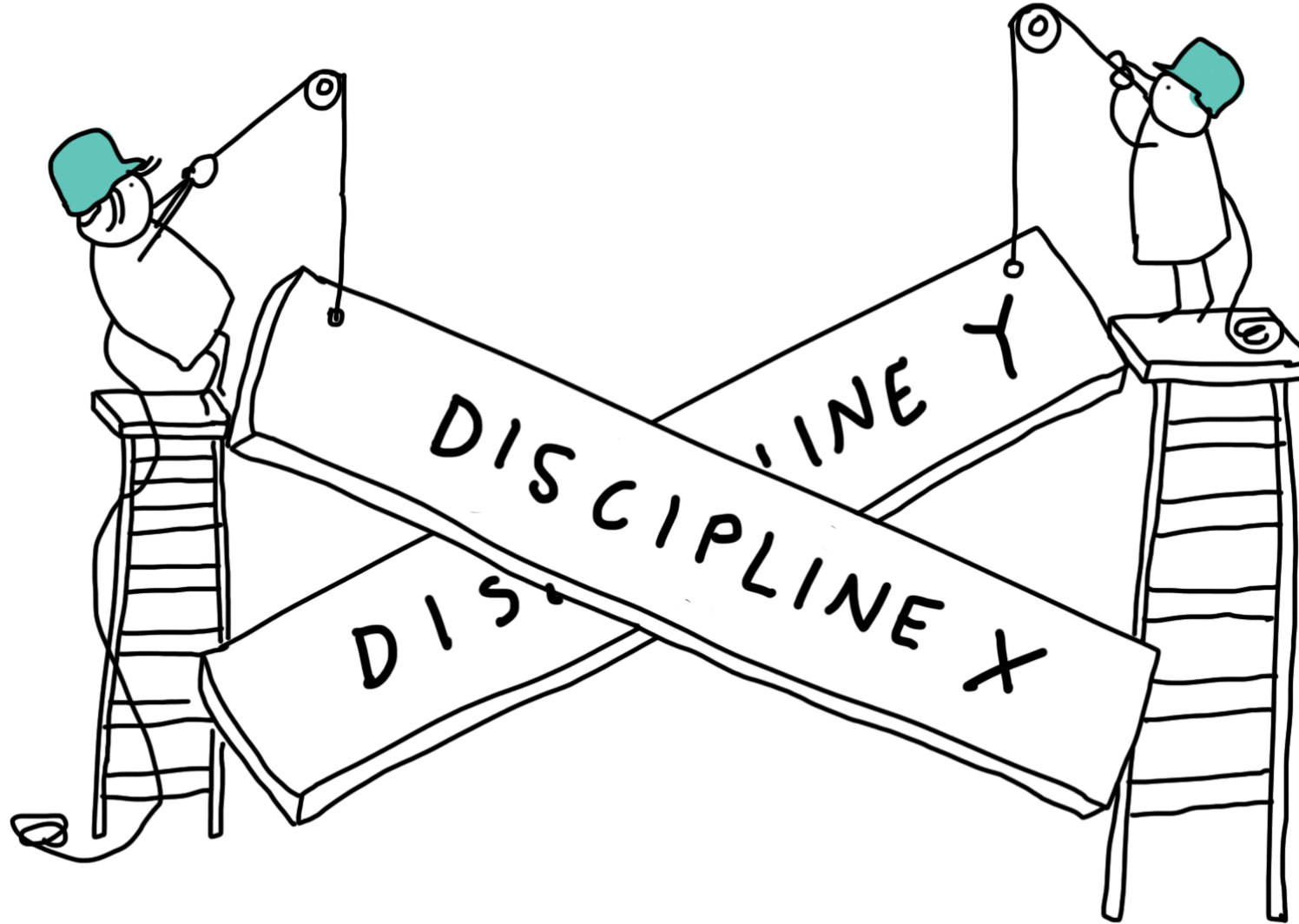




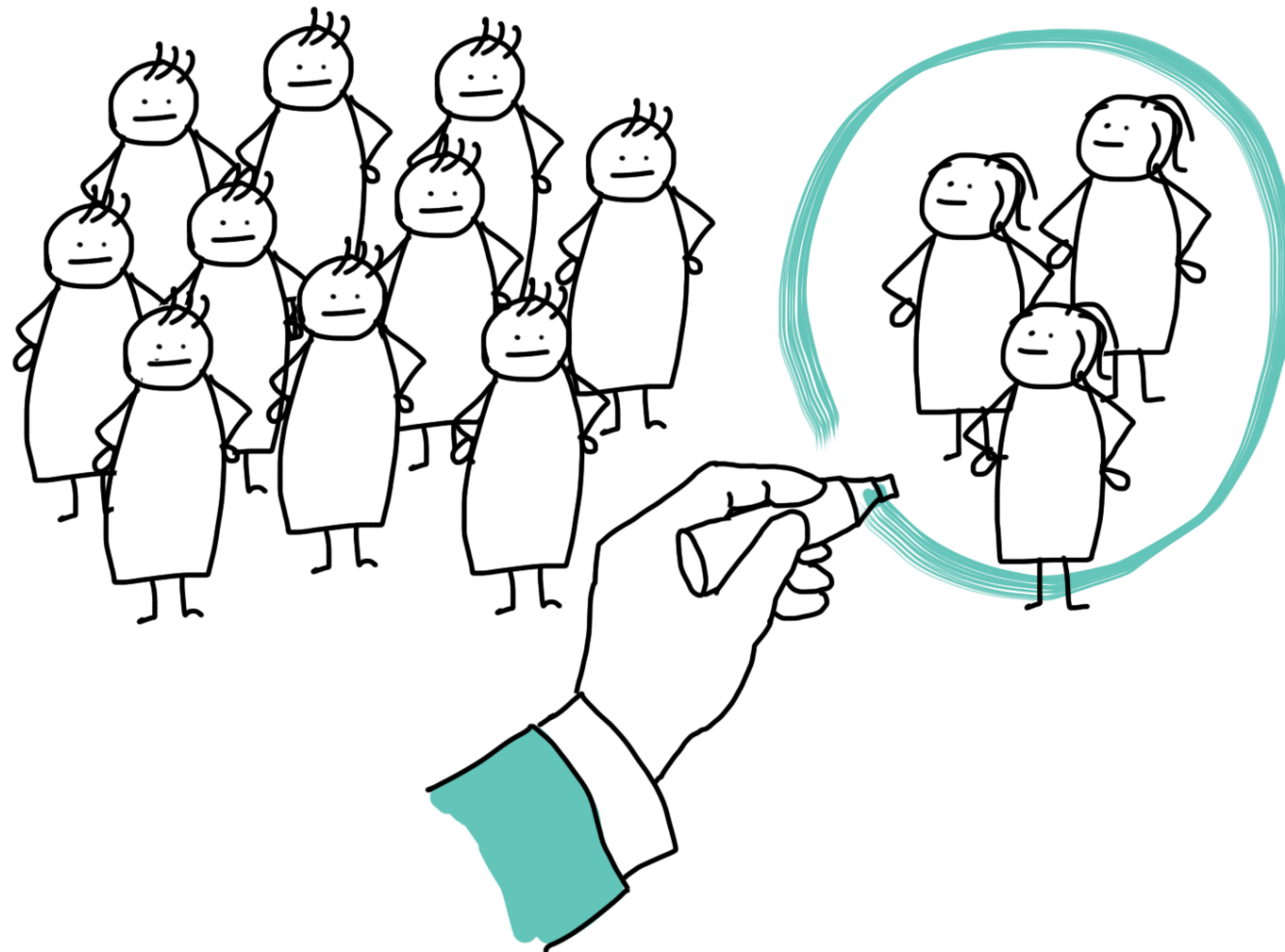
THE INSTITUTE HELPS ARTISTS, RESEARCHERS AND
SOCIAL AND CULTURAL ACTORS TO CREATE
INTERNATIONAL NETWORKS



OUR APPROACH IS CROSS-DISCIPLINARY



WE HAVE A STRONG MINORITY AGENDA



WE IDENTIFY SIGNALS OF CHANGE IN THE
FIELDS OF ART, CULTURE AND SOCIETY



CHALLENGES

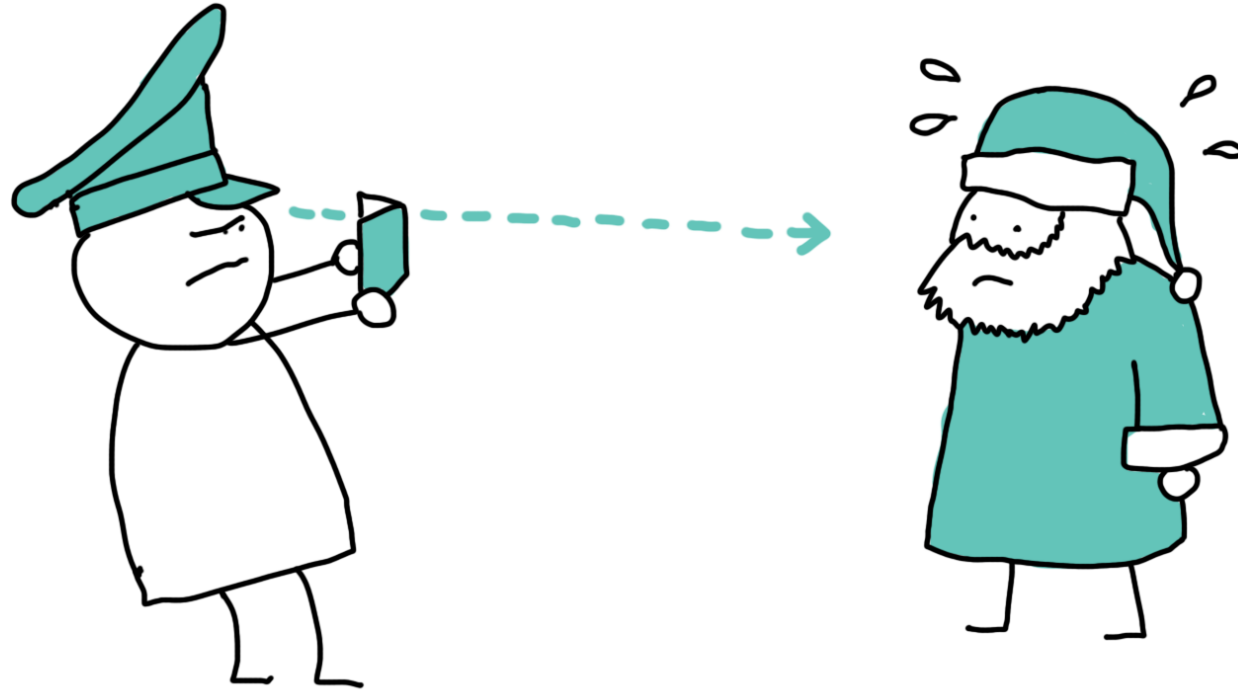


COVID-19

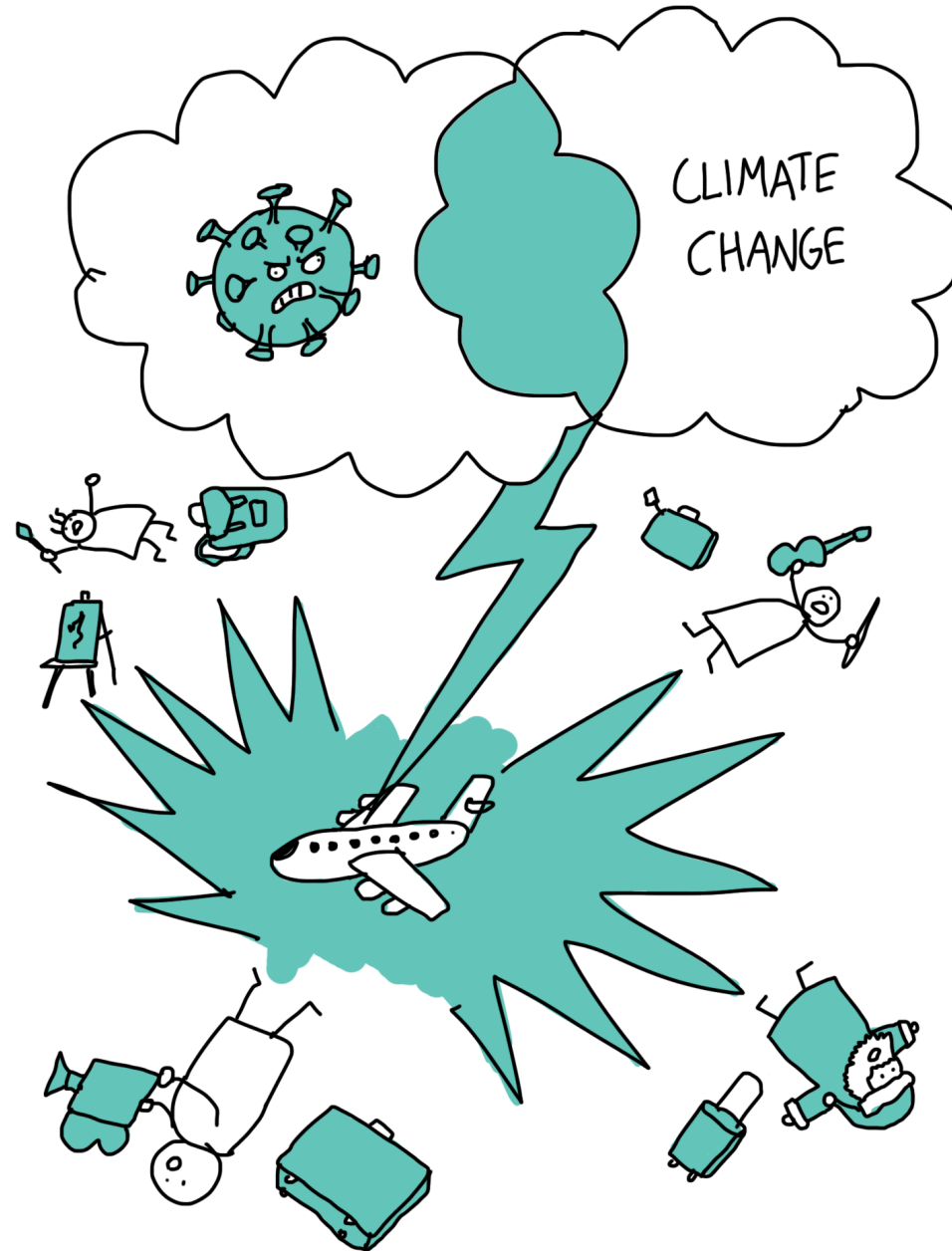


BREXIT

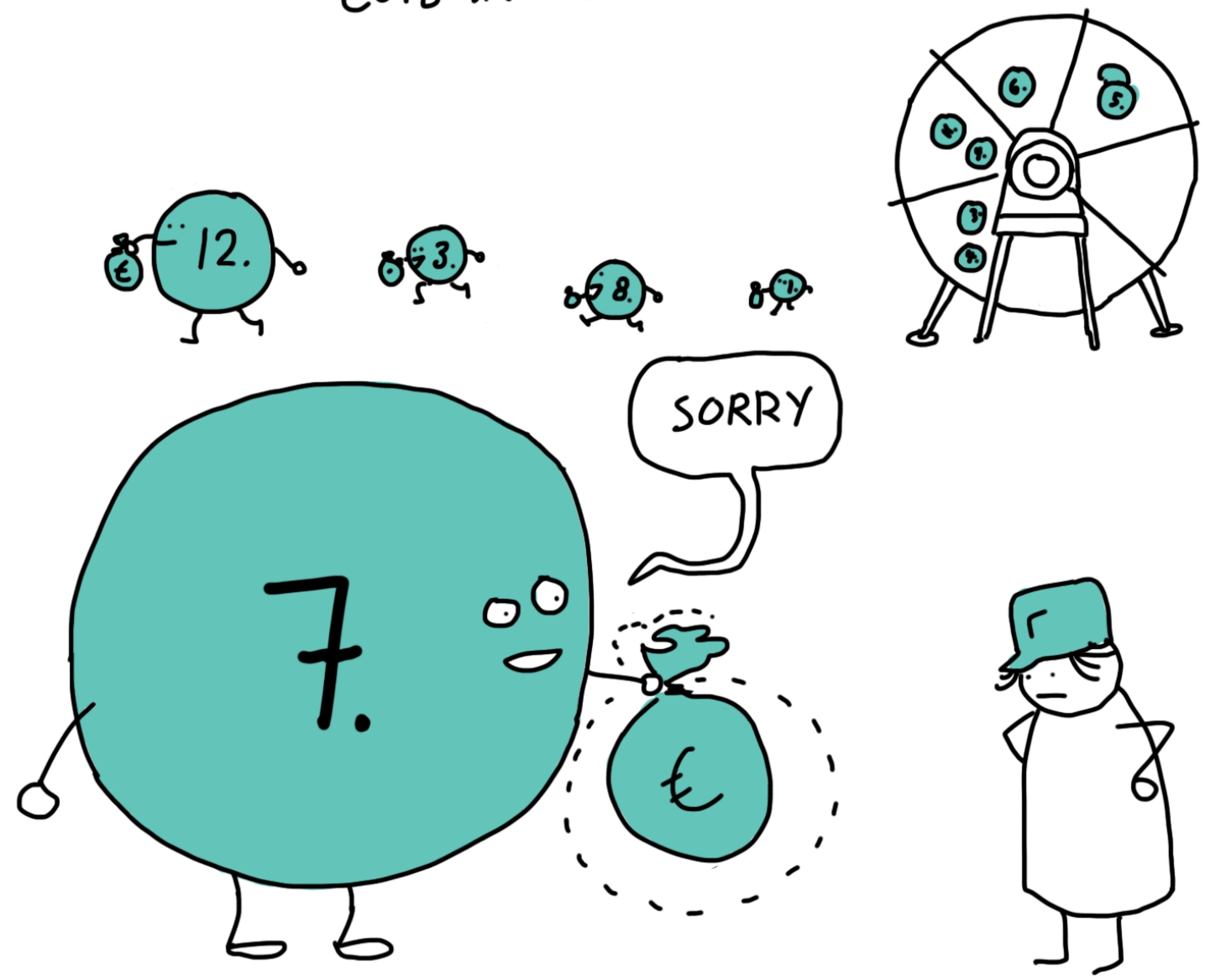
UK BORDER



CLIMATE CHANGE AND ITS IMPACT ON TRAVEL AND MOBILITY

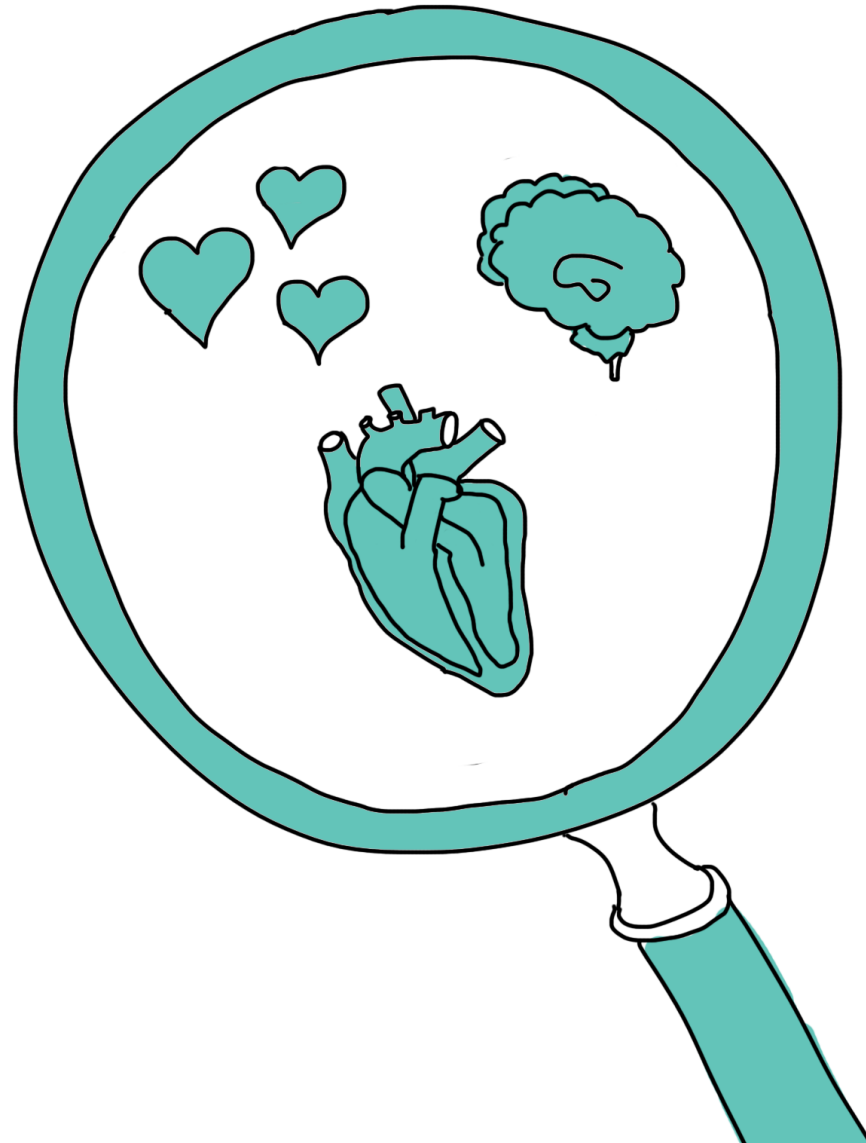


CUTS IN FUNDING



STEPS IN 2021-
2023

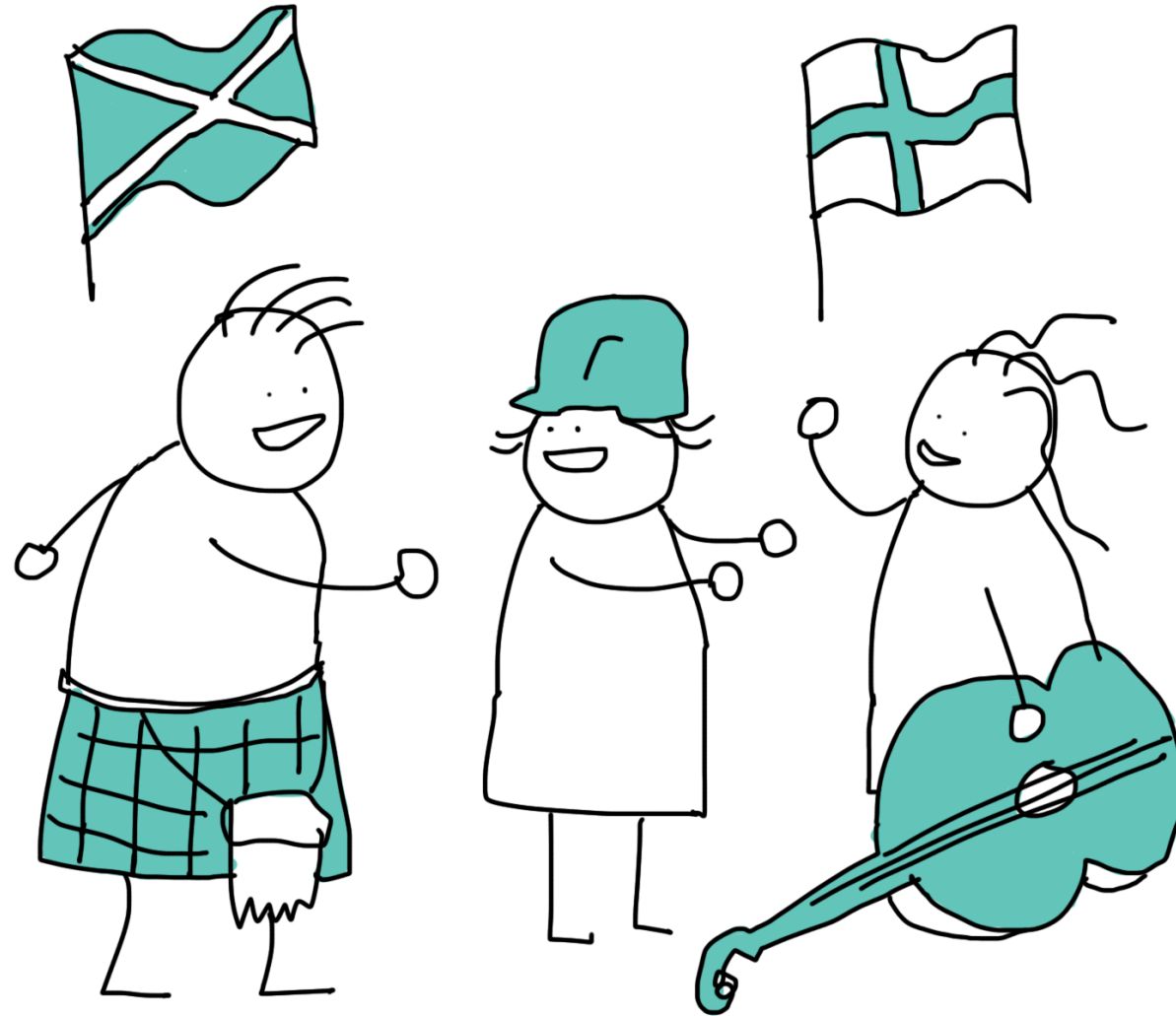
FOCUS MORE ON WELLBEING
AND MENTAL HEALTH WITHIN BOTH
PROGRAMMES



DIVERSIFY THE FUNDING STRATEGY



INCREASE EXCHANGE WITH SCOTTISH ORGANISATIONS



PROACTIVELY RETHINK INTERNATIONAL
COLLABORATION POST COVID-19 AND THE
CLIMATE CRISIS



DIVERSIFY COLLABORATION
EMPHASISING MINORITIES AND
UNDERPRIVILEGED ACTORS



WWW.FINNISH-INSTITUTE.ORG.UK

BY @VOINONEN/BUSINESSILLUSTRATOR.COM